



Nominating Committee named for director election

Three board members will be elected to serve three-year terms at Slope Electric's 66th annual meeting, which will be held Wednesday, June 8, at the New England Public School.

The bylaws of Slope Electric Cooperative Inc., state in Article 4, Section 4, directors can be nominated one of three ways:

1. Through the Nominating Committee. The committee's first meeting is March 10 to review procedures and responsibilities of directors plus qualifications for directorship. The second meeting will be March 23 to nominate candidates for the ballot and to approve resolutions. The list of Nominating Committee members appears to the right.

2. Members can also be nominated by filing a petition with 15 signatures. Filing must be done at the Slope Electric office on or before 30 days prior to the annual meeting on June 8.

3. Members can also be nominated from the floor at the annual meeting. This method means your name will not be

preprinted on the ballot, but it can be written in by your supporters.

The following members have been appointed by the board of directors to serve on the Nominating Committee for the year 2011:

RD (Dick) Frederick
14409 66th St. S.W.
Amidon, ND 58620
(701) 879-6329

Donald Sipma
P.O. Box 1192
Hettinger, ND 58639
(701) 879-6329

Alberta (Faye) Burke
7308 149th Ave. S.W.
Bowman, ND 58623
(701) 523-5363

Randall Gaebe
8410 149th Ave. S.W.
Bowman, ND 58623
(701) 523-3410

Leonard Kaufman
5593 102nd Ave. S.W.
Regent, ND 58650
(701) 563-4342

Jerald Rafferty
6294 110th Ave. S.W.
New England, ND 58647
(701) 563-4763

Leonard Jacobs
401 Hwy. 22 S.
Reeder, ND 58649
(701) 853-2219

Steven Reimer
12906 88th St. S.W.
Scranton, ND 58653
(701) 275-8849

Douglas Donner
1905 13th St. N.W.
Reeder, ND 58649
(701) 853-2293

Brent Roll
6326 83rd Ave. S.W.
Mott, ND 58646
(701) 824-3123

If you are interested in being a candidate for the Slope Electric Cooperative Inc. board of directors or wish to have a member considered for nomination, please contact a member of the committee listed above prior to the meeting on March 10.

The Nominating Committee will post a list of nominations prior to the annual meeting.

Current board members whose terms expire in 2011 are Terry Jacobs and James Kerzman of Hettinger County, and Steven Wegner of Adams County.

The official notice of Slope Electric's 66th annual meeting will be mailed to members in May.



ATTEND THE ANNUAL MEETING

Slope Electric Cooperative's annual meeting is **June 8**

at the **New England Public School**

in New England

Registration starts at 4:45 p.m.

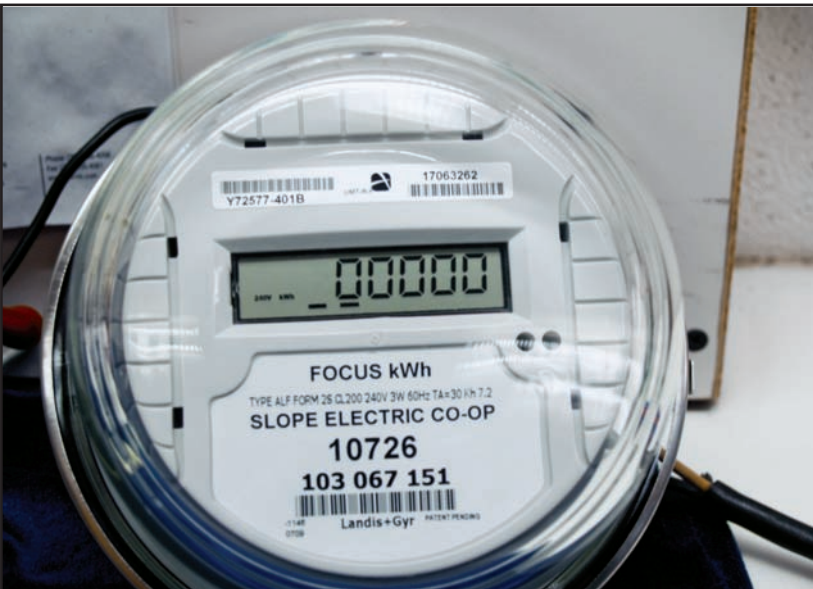
Dinner begins at 5:15 p.m.

The annual meeting commences at 6:30 p.m.

Plan now to attend and support your cooperative!



Meter in first sequence – 888888



Digital meter reading you report



Digital voltage output

AMR

(automated meter reading)

Slope Electric moves forward with transitioning our system to AMR (Automated Meter Reading). This allows us to retrieve meter readings from our office in the future. If your meter had been changed, you still need to submit a meter reading until the process is complete.

HOW TO READ YOUR METER

The new meters will display a sequence of three digital outputs which cycle continuously.

- The first display is 888888 signifying the start of the sequence;
- Followed by the five-digit meter reading **you report**;
- Followed by the four-digit voltage output number.

Testing AMR will occur shortly and members will be notified when they can stop reading their meters.



Operation Round Up update

The Operation Round Up board met Feb. 7 and reviewed four applications submitted from two individuals and two organizations. The total awarded was \$2,767.

Chosen by the directors, the co-op members serving on the board include: Apryl Pierce, Lynn Greff, Faye Burke, Bruce Hagen and adviser Terryl Jacobs. The Operation Round Up board meets every quarter. If you or someone you know would like to apply for Operation Round Up

funds, contact one of the board members or Lynn at Slope Electric, or download the application from www.slopeelectric.coop. The next meeting will be in May.

Watch for the announcement of scholarship winners!

Slope Electric Cooperative thanks the many students who applied for the co-op's three college scholarships totaling \$2,000 for the 2011-2012 school years.

Slope's scholarship program is designed to recognize and support children of cooperative members and develop future leaders. Members, please continue to read your Slope *North Dakota LIVING* center pages, which will soon announce the scholarship winners!



Don't be in the dark about GENERATOR SAFETY

Slope Electric Cooperative strives to provide you with reliable, uninterrupted service every day of the year, but sometimes Mother Nature creates unavoidable power outages. Then, many homeowners use portable electric generators until power is restored.

"Portable electric generators are a good source of power during electrical outages. However, generators that are improperly installed or operated can become deadly," noted Michael Clendenin, executive director of the Electrical Safety Foundation International.

A qualified, licensed electrician should install your generator to ensure that it meets local electrical codes.

Do not connect generators directly to household wiring. For everyone's sake — yours and the co-op's line crews — generators need to be isolated from the electric co-op's power lines. This means you should install a double-throw switch on your generator. Otherwise, the generator could feed power back into utility lines as power crews work to restore your electric service, putting their lives at risk!

Portable generators can be very helpful to consumers during outages. But we urge you to follow these safety guidelines:

- Make sure your generator is properly grounded.
- Keep the generator dry.



- Make sure extension cords used with generators are rated for the load, and are free of cuts or worn insulation, and have three-pronged plugs.
- Do not overload the generator.
- Do not operate the generator in enclosed or partially enclosed spaces. Generators can produce high levels of carbon monoxide very quickly, which can be deadly.
- Do not refuel a generator while it is running.
- Turn off all appliances powered by the generator before shutting down the generator.
- Follow the manufacturer's instructions for safe operation and maintenance.

DEFEND YOUR HOME with a **SUMP PUMP**

A sump pump may be a homeowner's first line of defense against a waterlogged basement. Making sure your sump pump works now can prevent problems later. A North Dakota State University (NDSU) video offers tips on getting sump pumps ready to handle spring and summer water. It's available at www.ag.ndsu.edu/flood/home/sump-pump-tips.

HOW A SUMP PUMP WORKS

Drain tile, which can be clay tile or perforated plastic pipe, collects the water that builds up around the house's foundation and drains it into the sump. The sump is a hole about two feet in diameter that holds 15 to 25 gallons of water. When the water reaches a certain level, the sump pump turns on and lifts the water to ground level, then discharges it into a pipe that leads away from the house.

Sump pumps, available at hardware and home improvement stores, come in two basic models: upright, commonly called pedestal, and submersible. Either will work well with proper maintenance, according to Tom Scherer, an NDSU Extension Service agricultural engineer.

The pedestal pump's motor is on top of the pedestal and the pump is at the base, which sits on the bottom of the sump. The motor should not get wet. A ball float turns the pump on and off. One advantage of this type of pump is that the on/off switch is visible, so you can see the ball float's action easily, Scherer says.

Submersible pumps are designed to be submerged in water and sit on the bottom of the sump. The on/off switch is attached to the pump. A sealed mercury switch generally is more reliable than a pressure switch, Scherer says.

Either type of pump should have a check valve on the water discharge pipe so water doesn't flow back into the sump when the pump shuts off. Water flowing back into the sump can cause the pump to turn on and off more frequently than necessary, which decreases the life of the pump.

Homeowners should consider having a battery-powered backup sump pump with fully charged batteries in case of a power outage, Scherer says.

HOW TO TEST A PUMP

To test whether the pump is operating properly:

- Make sure the pump is plugged in.
- Remove the sump's lid, if it has one, and use a flashlight to see whether the sump is clean and the pump outlet isn't plugged.
- Slowly pour about five gallons of water into the sump at the same speed that water normally would flow into the sump.
- Watch the on/off switch's action and listen to the pump.
- Make the pump turn on and off at least twice.

"If something doesn't work right, fix it as soon as possible," Scherer advises.

A number of factors, including the area of drainage connected to the sump and the depth of the basement, determine the right size sump pump for a house. However, a one-third horsepower pump generally works for most houses, he says.

Homeowners should not pump the water into their septic system or basement floor drain. Scherer says homeowners should discharge sump water at least 20 feet from their home in a way that the water will drain away from the house.

For more information about sump pumps, visit the NDSU Extension Service Web site at www.ag.ndsu.edu/flood.



PHOTO BY LAVYN MUDDER

While a sump pump won't be able to stave off floodwaters like those that inundated Linton in March 2009, it may be a homeowner's first line of defense against a waterlogged basement.



Home safety checklist

Protect your family from electrical hazards by using this short checklist. These simple steps will help you identify and correct electrical dangers commonly found in homes:

- ✓ **Check the wattage of all bulbs in your lights.** Are the bulbs the appropriate wattage for the size of the fixtures?
- ✓ **Check all lamp cords and extension cords.** Are cords placed out of the walking areas and free of furniture resting on them? Are cords in good condition (not damaged or cracked)? Take any item with a damaged power cord to an authorized repair center, or safely dispose of the item and purchase a new one.
- ✓ **Check all wall outlets and switches.** Are all outlets and switches cool to the touch? Unusually warm outlets or switches may indicate an unsafe wiring condition exists. Are all outlet and switch cover plates in good condition? Replace any missing, cracked or broken cover plate.
- ✓ **Are all appliance cords placed away from hot surfaces?** Pay particular attention to cords around toasters, ovens and ranges. Cords can be damaged by excess heat.
- ✓ **Are all appliances located away from the sink?** Electrical appliances can cause a shock if they come in contact with water. Plug kitchen appliances into outlets protected by a ground-fault circuit interrupter (GFCI).
- ✓ **Are you regularly resetting tripped circuit breakers?** Circuit breakers that are constantly tripping indicate that the circuit is overloaded or that other electrical hazards exist. Consult a qualified, licensed electrician.
- ✓ **Are the bathroom outlets protected by GFCIs?** GFCIs should be installed in kitchens, bathrooms and other areas where the risk of electric shock is high. If you have any GFCIs, do you test them regularly?

Safety message from
Slope Electric Cooperative





TELL ME ABOUT MY COOPERATIVE

Neighbor helping neighbor. Applying the basic cooperative principles, North Dakotans have worked together to bring the brilliance of light to homes, farms and businesses across the state.

Electric cooperative members should be proud of the success of the cooperative business model and the spirit of cooperation that these organizations promote.

Here's the cooperative difference:

You have a vote

What makes cooperatives special? Cooperatives are owned and controlled by those they serve. Each person has a voice and a vote in the co-op's activities. The cooperative way of doing business is a true example of grass-roots involvement and democracy in action.

Your co-op is locally governed

Your electric cooperative is a nonprofit entity, owned and controlled by the members. When you purchase electricity from an electric cooperative, you become

WHAT'S THE COOPERATIVE DIFFERENCE?

an owner of the cooperative. As a locally owned company, a cooperative is focused on local needs and priorities.

Members elect a board of directors to oversee the operations of your cooperative. Each director represents the members of the cooperative on the board, and each director is a cooperative member.

Directors know what consumers expect from their cooperative, and what consumers' expectations will be in the future so they can help the cooperative progressively work toward the future.

You earn capital credits

Did you know that electric cooperatives return money to their members in the form of capital credits? Does that surprise you? It shouldn't.

Your electric cooperative is a nonprofit

business, operated to provide at-cost electric service to the members.

A co-op's net margins, or what is left above expenses and reserves, do not belong to the utility; they belong to the members. The margins must either be used to improve or maintain operations, or be distributed to the members.

So, when all the expenses are paid, the cooperative's margins are credited to you in the form of capital credits. As the financial condition of your cooperative allows, you are paid these capital credits in cash. In the meantime, your capital credits are your equity in the cooperative.

Refunds are allocated based on the amount of business a member does with the cooperative – the more electricity used, the larger the capital credit check.

It's all possible because you belong to a Touchstone Energy® cooperative. Your electric cooperative is here to serve with the Touchstone Energy core values: integrity, accountability, innovation and commitment to the community.





of ELECTRICAL SAFETY

or any place indoors within six feet of water. Outdoors, GFCIs are specified near pools and hot tubs.

But many homes built before 1975 are not equipped with GFCIs. If your home is one of them, call a licensed electrical contractor to install GFCI receptacles wherever they may be needed.

These GFCI outlets should be installed anywhere an appliance might come in contact accidentally with water, typically in the bathroom, kitchen, laundry room or garage.

AFCIs

Arc-fault circuit interrupters (AFCIs) are designed to shut off a circuit when they detect an arc. AFCIs respond much more quickly than regular circuit breakers or fuses and are useful for preventing fires caused by arcing.

AFCIs are required in bedrooms for new residential construction. They can be mounted in breaker panels or receptacles, or sometimes in the plug cap itself.

Arcs can occur along the circuit in residential electrical systems and at outlets and switches behind walls. Conditions that trigger arc faults include:

- Damaged wires from nails driven into walls;
- Cracked insulation on wires due to aging or stress;
- Frayed wires at stress points; loose or improper connections; faulty electrical equipment; and
- Overheated electrical wires.

Home renovations present a prime opportunity for an investment to improve a home's electrical safety. The Electrical Safety Foundation International (ESFI) urges consumers to install arc-fault circuit interrupters to protect all of the circuits throughout the home during renovations.

ESFI recommends having AFCIs



A ground-fault circuit interrupter should be installed anywhere an appliance might come into contact with water.

installed on all general purpose circuits throughout the home, particularly in older homes where arcing hazards could have developed over several years.

For more information on electrical safety, visit the ESFI Web site at www.electrical-safety.org.

Reading the names of electrical safety devices is a lot like looking at an eye chart: GFCI or AFCI. But don't worry. There's nothing wrong with your eyes. All those letters are just a handy way of shortening the names of devices that can protect you and your family from dangerous electrical hazards at home. Your electric cooperative recommends you learn about these devices and install them where needed in your home. These devices can save your life, or the life of a loved one.

GFCIs

Ground-fault circuit interrupters (GFCIs) prevent shock or electrocution by monitoring the current flowing through a circuit. If an appliance is damaged, current can leak out of it. Unfortunately, that current can travel through a person holding the appliance in a wet or damp area. The GFCI-equipped receptacle senses the current imbalance and immediately shuts off the power at the receptacle.

So effective are GFCIs in preventing shock that the National Electrical Code has required them in new bathrooms since the mid-1970s. Since then, the list has grown to include kitchens, crawl-spaces, unfinished basements, garages

SLOPE ELECTRIC COOPERATIVE INC.

BOARD OF DIRECTORS

Jim Kerzman, President	Mott
Terryl L. Jacobs, V. Pres.	Regent
Steve Wegner, Sec.	Reeder
Jerome D. Caron, Treas.	Scranton
John Lee Njos	Rhame
Lyle Narum	Bowman
Lauren Klewin	Amidon
Anthony Larson	Hettinger

EMPLOYEES

Don Franklund, Clayton Hoffman	Managers
Rex Sadler	Chief of Staff
Travis Kupper	Chief Financial Officer
LaWanna Wilhelm	Key Accounts Executive
Rodney Benz	AMR/SCADA Technician
Lynn Klein	Secretary
Beverly Braun	Bookkeeper/Consumer Accts. Rep.
Judy Kirschmann	Customer Service Rep., Slope Services
Tessa Palczewski	Billing Analyst
Kathy Lentz	Receptionist
Daniela Howie	Operations Clerk
Darlene Heberholz	Plant Accountant
Leonard Gartner	Line Technician
Arlin Reindel	Line Technician
Darwin Wilke	Line Technician
Kenneth Dobitz	Line Technician
Lyle Kovar	Line Technician
Dean Volk	Line Technician
Craig Turner	Line Technician
Jeff Boynton	Line Technician
Christopher Backhaus	Line Technician
Andrew Sonsalla	Line Technician
Kyle Binstock	Apprentice Line Technician
Dustin Hoff	Apprentice Lineworker
Cody Braaten	Apprentice Lineworker
Roger Wipf	Warehouseman



Introducing....

Jace Van Boynton was born Dec. 4, 2010 to Jeff and Nicole. He weighed 6 pounds, 1.6 ounces, and was 18.5 inches long. Jeff is a line technician at Slope Electric Cooperative's Bowman outpost.