

CURRENT NEWS



What's Happening

Join us on June 4 in Amidon for our Annual Meeting!



MAY 8

Online voting opens for the Annual Meeting



MAY 14

Operation Round Up application deadline



JUNE 4

Slope Electric's Annual Meeting in Amidon

Cooperative happenings

Luck-of-the-Draw Scholarships available

At our Annual Meeting on June 4 in Amidon, we will have five Luck-of-the-Draw Scholarships available for members and dependents of members. Three \$1,000 scholarships will be awarded to full-time students and two \$500 scholarships to full- or part-time students. Visit our website for details.

RDFC grant funds available

The Rural Development Finance Corporation (RDFC) announced it has approved a 2026 grant allotment of \$2,000 to Slope Electric to be used to support community-owned entities, nonprofits and community-based projects. Read more on our RDFC webpage.

Do you have a generator?

To help us better serve our members, we're asking you to complete a short form letting us know whether you have a generator on your property. Visit our website to complete the form.



Read this month's issue of *North Dakota Living* and more by scanning the QR code or visiting our website.



Your Touchstone Energy® Cooperative 

FIRE MITIGATION TOOLS

As the threat of wildfire increases nation wide, there are a number of new devices and technologies that are being developed to help rural electric utilities protect their local grids. Today, our cooperative focuses on key factors with the most important being vegetation management, including regular tree trimming and clearing brush away from power lines.

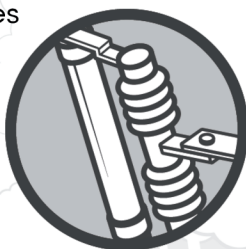
Looking to the future, there are new technologies that can help us enhance prevention of fires and respond.

View Slope Electric's Fire Mitigation Plan on our website or by scanning the QR code.



NON-EXPULSION FUSES

Replace conventional fuses, which can expel hot gases and molten metal when tripped.

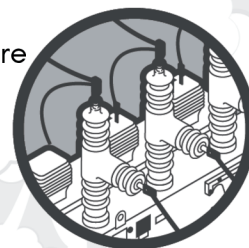


WEATHER FORECASTING

High-resolution monitoring and analysis to inform operational decisions.

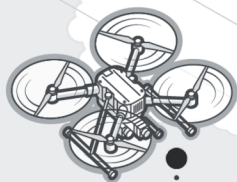
SMART SWITCHES

Allow grid sections to be de-energized during periods of high wildfire danger.



SATELLITE AND DRONE IMAGING

High-resolution imaging can improve vegetation management.



DUCTILE IRON AND COMPOSITE POLES

Non-wood materials offer greater resistance to fire.



POLE AND CONDUCTOR WRAPPING

Fire-resistant covers protect poles and wires



ADVANCED LINE SENSING

Real-time monitoring of power flow, line temperature and fault location to enable faster response to an event.

