

## THIS ISSUE:

- How power gets to you
- Lineworkers attend training
- Fire mitigation

**JULY  
2025**

*Members enjoyed rounds of bingo after the business meeting and meal.*



# Members gather for annual meeting

See story on next page



# Members gather for Annual Meeting

Members gathered in Bowman for Slope Electric Cooperative's 2025 Annual Meeting on June 5. Upon registration, members were given a thank you gift and were welcome to visit with Slope Electric's CEOs, board directors, staff and other members.

Slope Electric President Steven Wegner welcomed and thanked members and guests for attending the Annual Meeting. Taylor Sonsalla performed the national anthem and members of the Star of North Dakota led the membership in the Pledge of Allegiance.

The membership voted to fill District 2 and District 4 board positions. Anthony Larson from Hettinger was reelected to serve as a director for District 2. Chip HJ Fischer from Rhome was reelected to serve as a District 4 director, and Kevin Thompson from Bowman was elected to fill a District 4 director position. Additionally, the membership voted to approve the 2024 Annual Meeting Minutes and various bylaw amendments.

Members listened to cooperative updates from Co-General Managers/ CEOs Travis Kupper and Jason Bentz and Chief Financial Officer Alex Craigmile. Chief of Staff/Operations Manager Dean Volk and Manager of Member Relations Brooke Waltner also provided updates to the membership. Lane Miller, a Slope Electric member and vice president of the Operation Round Up board of directors highlighted the charitable foundation's 2024 giving.

Blake Larson was recognized for being awarded the Basin Electric Power Cooperative scholarship and Kailee Gussey was recognized for being Slope Electric's Youth Tour delegate. Slope Electric also awarded five Luck-of-the-Draw scholarships. Learn more about the winners on C3.

Each year, a number is randomly selected from among the entire membership for a progressive drawing, and that member wins a cash prize if present. Westley Humbrech's name was drawn and he was present to collect the \$400 prize.

After the business meeting, members enjoyed a complimentary meal served by Home Cooked Meals and were welcome to stay for rounds of bingo.

The board of directors, co-general managers and staff at Slope Electric wish to thank members for participating in the Annual Meeting of the membership and look forward to meeting your electrical service needs in the future. ■



**Taylor Sonsalla**, left, daughter of line technician **Andrew Sonsalla**, sang the National Anthem for the membership.



**Dean Volk**, left, presented Slope Electric member, **Westley Humbrech**, with his \$400 progressive drawing cash prize.



## MESSAGE FROM MEMBER RELATIONS:

# Luck-of-the-draw recipients

At Slope Electric Cooperative's Annual Meeting June 5 in Bowman, five scholarships were awarded. These Luck-of-the-Draw scholarships were available to Slope Electric members and dependents of members enrolled full time or part time in college courses.

These scholarships are a unique opportunity to award scholarships to a broad spectrum of our membership, whether they are a nontraditional student taking online courses or a high school student taking college credits. This year, three \$1,000

scholarships were awarded to full-time students and two \$500 scholarships to full- or part-time students.

We are excited to announce the following recipients of this year's Luck-of-the-Draw scholarships: Landyn Gerbig, Adyson Gerbig and Julie Sarsland were each awarded a \$1,000 scholarship, and Gracia Jorgenson and Kennedy Senn were each awarded a \$500 scholarship. Thank you all for attending our annual meeting, congratulations and best of luck in your future endeavors! ■



## A MESSAGE FROM BASIN ELECTRIC:

# A year of growth, innovation and resilience

BY BASIN ELECTRIC POWER COOPERATIVE CHIEF EXECUTIVE OFFICER AND GENERAL MANAGER TODD BRICKHOUSE AND BOARD PRESIDENT WAYNE PELTIER



Peltier



Brickhouse

Basin Electric Power Cooperative continues to adapt to challenges, while ensuring reliability and affordability for its members. In 2024, growth continued across Basin Electric's service

territory, with the 2025-34 financial forecast showing the cooperative's projected load growth over the next 10 years is expected to reach 3% – significantly higher than the national average of less than 1%.

To meet this demand, Basin Electric's 2025-34 financial forecast is showing significant infrastructure investments of nearly \$8 billion in projected capital expenditures over the next decade, nearly doubling its balance sheet. This figure is anticipated to increase with future iterations of the financial forecasts.

### Strategic investments

With rapid growth, Basin Electric has taken proactive steps to expand its generation and transmission capacity. In 2024, the cooperative continued making significant investments through major capital projects and additional strategic investments across its system. These investments support long-term system resilience, enhance grid reliability and accommodate increasing energy demand. Several notable projects and developments include:

- **Dynamic Line Rating (DLR) Technology:** Installed DLR technology to enhance grid reliability and optimize transmission capacity in northwestern North Dakota.
- **Leland Olds Station Substation:** A new 345-kilovolt (kV) substation, one of Basin Electric's largest, is under construction near Stanton, with completion expected by this summer.
- **Pioneer Generation Station Phase IV:** Progressing toward an additional 580 megawatts (MW) of capacity by 2025 to support load growth and grid stability in the Bakken region.
- **Roundup to Kummer Ridge transmission line:** A

33-mile, 345-kV transmission line was energized in December 2024, five months ahead of schedule, enhancing grid reliability and reducing congestion.

- **Bison Generation Station:** Basin Electric spent 2024 planning its next major baseload generation facility, the Bison Generation Station, which was approved by the board of directors in January. This \$4 billion, 1,470-MW natural gas facility near Epping will be Basin Electric's largest solely owned power plant. It is expected to begin operations in 2030.

### Carbon capture and environmental stewardship

Basin Electric continues to lead the nation in CO<sub>2</sub> capture and storage. In February 2024, the Great Plains CO<sub>2</sub> Sequestration Project went into service, with Dakota Gasification Company capturing and sequestering additional CO<sub>2</sub> via permanent geologic storage reservoirs adjacent to the plant. The facility reached a milestone in August 2024 by sequestering over 1 million metric tons of CO<sub>2</sub>.

In November 2024, Basin Electric updated its sustainability report, showcasing the cooperative's commitment to reliable, affordable and sustainable energy, environmental stewardship and member-focused governance.

### Regulatory challenges and advocacy

Basin Electric remains committed to defending its all-of-the-above energy strategy, ensuring reliable, affordable power for members by prioritizing dispatchable resources, such as coal and natural gas alongside wind and solar. The Environmental Protection Agency's regulatory overreach continued to threaten reliability, making it critical to advocate for policies that support dispatchable resources. In 2024, Basin Electric strengthened partnerships with the National Rural Electric Cooperative Association, other generation and transmission entities, and industry allies to challenge regulatory threats, while continuing to serve reliable power to its members.

### Looking ahead

Basin Electric remains focused on providing reliable, affordable and sustainable power for its

members. Through strategic investments, thoughtful decisions and regulatory advocacy, the cooperative will continue to adapt, innovate and invest to ensure long-term success. ■

**Basin Electric's mission:** *We are a safe, environmentally responsible cooperative that provides reliable, affordable power, products and services to sustain the quality of life for our member-owners across rural America.*

**Editor's note:** *Basin Electric Power Cooperative supplies much of the power distributed to Slope Electric Cooperative members throughout the service area. We asked Todd Brickhouse and Wayne Peltier to update our members on what is happening at Basin Electric.*

## MANAGER'S MESSAGE:

# How power gets to you



**Travis Kupper**

Co-General Manager/CEO

Every time we flip a switch, we often take for granted the complex journey electricity travels – from generation to transmission – before it lights our homes and powers our lives. Have you ever wondered how the electricity that powers your home travels from generation plants to your outlets? Understanding this journey can deepen your appreciation for the reliable service we strive to provide.

Here's a more detailed look at how power reaches you:

### Generation

Electricity is produced at power plants using various resources, including coal, natural gas, nuclear and renewable sources, such as wind, solar and hydro. Each source plays a vital role in creating a balanced energy mix that meets our communities' needs, while keeping a reliable source of energy for our membership.

### Transmission

After generation, electricity enters the high-voltage transmission system. These large towers carry electricity over long distances to minimize energy loss. Our regional grid connects multiple power plants and allows for a reliable flow of electricity, helping to balance supply and demand.

### Substation transformation

Once the electricity arrives at substations, it undergoes a transformation. Here, the high-voltage


electricity is stepped down to a lower voltage suitable for distribution. Our substations are equipped with advanced technology that monitors the flow of electricity and ensures it meets safety standards. Additionally, this technology allows efficiency during outages by allowing access from remote sites to help restore power.

### Distribution network

From substations, electricity travels through a network of distribution lines. This system is designed to deliver power directly to homes and businesses in our service area. Our dedicated teams regularly inspect and maintain these lines, ensuring they remain safe and efficient.

Employees at Slope Electric Cooperative are committed to providing you with reliable service. In the event of outages, they work diligently to assess the situation and restore power quickly. We use technology to pinpoint issues and prioritize repairs, focusing first on critical services and areas with the most members affected.

Understanding how power is delivered allows you to appreciate the complexities of our system and the importance of maintaining it. We encourage you to ask questions, share concerns and participate in our in-person events. ■



## MESSAGE FROM OPERATIONS: **Lineworkers attend Hotline School**



**Dean Volk**

Chief of Staff/  
Operations Manager

Each day, lineworkers come face-to-face with work that may potentially be hazardous, such as working on “hot” or energized power lines. Continuing education and training opportunities help the lineworkers at Slope Electric Cooperative be prepared to face situations that may arise in the field. The North Dakota Association of Rural Electric Cooperatives (NDAREC) hosts an annual Hotline School to ensure lineworkers are prepared to

work in energized power line situations and learn new techniques.

Earlier this summer, two of Slope Electric's lineworkers attended the hotline training, Brad

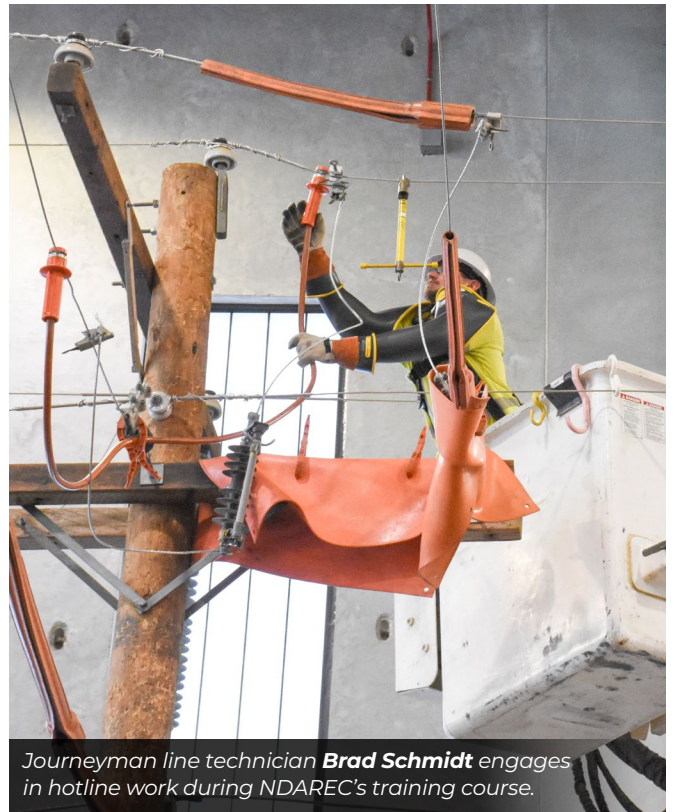
Schmidt and Shay Olson. During the two-day course, lineworkers rotated through hands-on training simulations that help enhance their skills of working on energized power lines.

Being able to work on energized power lines helps prevent electrical service interruption to members during routine maintenance and outages when possible. Training lineworkers with these skills also allows them to work safely and diligently during these situations. Having lineworkers participate in training opportunities helps familiarize them with new equipment, industry changes and keeps their skills up to date.

Safety remains our top priority at Slope Electric. To ensure our employees possess the knowledge and training to keep themselves, our team, members and communities safely powered, we are fortunate to have access to training opportunities like Hotline School through NDAREC. ■



Apprentice line technician **Shay Olson**, left, simulates working on an energized line situation.



Journeyman line technician **Brad Schmidt** engages in hotline work during NDAREC's training course.



## SAFETY STARTS WITH ME: Tips to reduce wildfire risks

While much needed rainfall has brought relief to many of our drought-impacted areas and reduced the immediate risk of wildfires, our electric cooperative remains committed to fire mitigation. Weather conditions can change quickly, and we prioritize taking precautions to ensure safety for our employees, members and communities.

“As we work across the service territory, we are equipped with fire mitigation equipment,” says Mark Frank, line technician. “This equipment includes a water cannon and fire extinguisher on each co-op vehicle.”

Cooperative employees are also briefed with the fire mitigation plan to ensure they can respond accurately to an emergency while working in the field. Through regular vegetation management, grid maintenance and hardening practices, Slope Electric Cooperative is proactively working to reduce risks and improve the reliability of our local system.

As a member of Slope Electric, there are steps you can take to prevent wildfires as well.

- **Follow local fire regulations.** Always check for burn bans or restrictions in your area before burning anything or using open flames outdoors.
- **Don't burn on windy days.** Avoid outdoor burning when it's windy or dry, as embers can easily spread and ignite surrounding areas.
- **Use equipment safely.** Tools like lawnmowers or chainsaws can spark fires. Use them during cooler times of the day and keep them in good working condition.
- **Clear vegetation and debris.** Maintain a defensible space around your home by removing dry leaves,



dead branches and other flammable materials.

- **Properly extinguish campfires.** Always douse your campfire with water, stir the ashes and ensure everything is cool to the touch before leaving the area.

Let's all work together to make this summer memorable and do what we can to ensure safety across our service area. ■



## Our next Operation Round Up application deadline is approaching!

The next application deadline is July 30. For more information and to apply visit our website at <https://slopeelectric.coop/operation-round>.

## SLOPE ELECTRIC BOARD MEETING HIGHLIGHTS: APRIL 24

The regular meeting of the board of directors of Slope Electric Cooperative was held on April 24 at the cooperative headquarters in New England. President Steven Wegner called the meeting to order at 9 a.m. A quorum was present. Slope Electric General Counsel Jennifer Grosz was appointed recorder for the meeting. Also present were Slope Electric co-General Managers/CEOs Travis Kupper and Jason Bentz, Chief Financial Officer Alex Craigmile, Chief of Staff/Operations Manager Dean Volk, Member Relations Manager Brooke Waltner and Board Liaison Connie Hill. Upper Missouri Power Cooperative General Manager Jeremy Mahowald attended as a guest.

**Consent agenda:** The consent agenda was approved as presented.

**Strategic items:** Bentz and Kupper presented the co-general managers' report, which included updates on federal issues, North Dakota managers group and others. Several additional Basin

Electric Power Cooperative board documents were available for review.

**Department reports:** Craigmile provided financial and statistical reports. Volk provided a report, including an update on projects. Waltner provided a report, including annual meeting preparation and communications from the co-op. Chief Information Officer Charlie Dunbar provided a report. Grosz provided a legal report.

**Action items:** The board reviewed and resolved various items, including policy review.

**Discussion/general information:** The board received an update from Mahowald on Upper Missouri plans and projects. They also discussed several other updates and items.

**Executive session:** The board entered an executive session.

The meeting concluded with an adjournment. Secretary Angela Carlson certified the accuracy of the minutes.

**Next meeting date:** The next meeting is at 9 a.m. on July 22 in Bowman. ■



## Discounts offered for Medora vacation

Slope Electric Cooperative is able to offer its members a discount by being a Touchstone Energy® member. Simply call 1-800-MEDORA-1 and give the discount code of "TOUCH2025" for a 15% discount on all of the following during any night of the season.

- Medora Musical
- Pitchfork steak fondue
- Bully Pulpit Golf Course
- Gospel Bruch tickets
- Old Town Hall Theater shows

### LODGING AT ANY OF THE FOLLOWING:

- Elkhorn Quarters
- Badlands Motel
- Rough Riders Hotel

The code is good for reservations over the phone, online or in person. A green fees discount will be applied at check-in for a tee time at the golf course.



116 E. 12th St. – PO Box 338  
New England, ND 58647-0338

Phone: 701-579-4191  
or 800-559-4191  
Fax: 701-579-4193

Email us:  
comments@slopeelectric.coop  
UNDERGROUND LINE LOCATES  
800-795-0555 or 811

## SLOPE ELECTRIC COOPERATIVE OFFICERS AND DIRECTORS

Steven Wegner, President  
Anthony Larson, Vice President  
Angela Carlson, Secretary  
Chip HJ Fischer, Treasurer  
Ryan Jacobson, Director  
Charlotte Meier, Director  
Cheryl Van Daele, Director  
Kevin Thompson, Director

## MANAGEMENT

Jason Bentz  
CO-GM/CEO

Travis Kupper  
CO-GM/CEO

[www.slopeelectric.coop](http://www.slopeelectric.coop)



Become a fan of Slope Electric Cooperative  
to learn timely co-op news!

*Slope Electric Cooperative Inc.  
is an equal opportunity provider.*