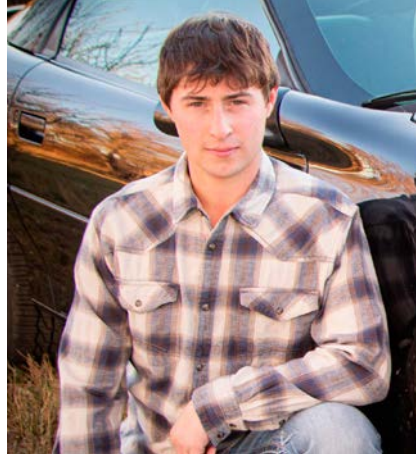


Scholarship winners



Caleb Sarsland



Nicholas Rodakowski



Andrew Eikamp



Bennett Jorgenson



Hannah Frank



Lillian Steeke

Slope Electric Cooperative Inc.

OUTLOOK

116 E. 12th St. • New England, ND 58647 | 701-579-4191 • www.slopeelectric.coop

In this issue:

- Annual meeting June 8
- 75 years of service
- Safety Starts with ME

Slope Electric awards scholarships to graduates

Slope Electric Cooperative is pleased to announce the 2022-23 student scholarship winners, whose families are member-owners of Slope Electric. In the spirit of the Touchstone Energy® Cooperatives value of commitment to community, Slope Electric is proud to offer yearly scholarships to assist in developing rural leadership in our region.

Slope Electric/Basin Electric scholarship

The winner of the Basin Electric Power Cooperative/Slope Electric scholarship award is **Caleb Sarsland**. He will receive a \$1,000 scholarship in the fall of 2023. Caleb is the son of Curtis and Jennifer Sarsland. Caleb will be attending Dickinson State University.

Area high school scholarships

As part of our commitment to community and area youth, Slope Electric is pleased to also award one \$500 scholarship to a graduating senior from each of the high schools within our service area:

- Bowman County High School chose **Nicholas Rodakowski**, son of Luke and Andrea Rodakowski. He will be attending North Dakota State College of Science (NDSCS) in pursuit of an industrial electrical degree.
- Mott-Regent High School chose **Andrew Eikamp**, son of Justin and Becky Eikamp. He will be attending North Dakota State University (NDSU) in pursuit of a degree in agricultural systems management and marketing.
- Hettinger High School chose **Bennett Jorgenson**, son of Cody and Tara Jorgenson. He will be attending NDSU in pursuit of a business degree.
- New England High School chose **Hannah Frank**, daughter of Kyle and Kyra Frank. Hannah will be attending NDSCS in pursuit of

a degree in dental hygiene.

- Scranton High School chose **Lillian Steeke**, daughter of Trevor and Misty Steeke. Lillian will be attending South Dakota State University in pursuit of a degree in agricultural communications.

No applications were received from Lemmon High School.

3C Construction and West Dakota Utility Services generously extended a \$500 scholarship to each of its owners this year, including Slope Electric. The intention of the scholarship is to provide support to students entering into a lineworker program or mechanic program at a certified vocational or technical school. We have incorporated this scholarship into our current scholarship program, which allows Slope Electric to offer two more scholarship awards to our member-dependents. No qualifying applications were submitted.

Thank you to all the students who took the time to apply, and congratulations to this year's winners! Slope Electric is proud to play a small role in supporting your educations and careers! ■



Manager's message: Get involved! Join us at the annual meeting



Jason Bentz

One of our biggest events of the year is coming up, when Slope Electric Cooperative will host our annual meeting for you, the members we proudly serve. I always look forward to this event, because it's a great opportunity for me and our employees to talk with our members and hear what's

on their minds.

We hope you'll join us for the annual meeting, which will take place on June 8 in Hettinger. For those who are unable to attend in person, we also offer a virtual option, which can be found on our website. Whether you attend in person or online, we thank you in advance for getting involved, because your participation means so much to us.

During the annual meeting, we'll share a few brief business updates and have a lot of fun, too! We'll have tasty food from B&E BBQ and Popper's Kettle Korn and prizes!

Spending time with you and hearing your take on our community's energy future is so important to us. In fact, it's essential, because everything we do is shaped by the members of our community. As we navigate major changes in the coming years, we need to hear from you and your neighbors to inform our planning as we strive to meet the long-term needs of all Slope Electric members.

Every year, we invest funds to make updates to our local system, which helps maintain reliability and grid resilience. Think of it this way: Every time you pay your electric bill, you're actually investing in your local area. By making these investments in our local system, we can ensure you have reliable power for everyday life.

We hope you'll exercise the benefits of your co-op membership and join us for the annual meeting on June 8. We look forward to seeing you! ■



Larson awarded Gold Credential



Anthony Larson, left, receives his award.

Anthony Larson, a Slope Electric Cooperative director representing Adams County, recently received the National Rural Electric Cooperative Association (NRECA) Director Gold Credential.

The Director Gold Credential recognizes electric cooperative directors committed to continuing their education and who desire a tangible credential that demonstrates their ongoing commitment to advancing their knowledge and performing their

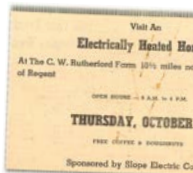
fiduciary duty to the best of their ability.

NRECA's director certificate programs are specifically designed to help electric cooperative directors, at every stage of their service, understand their roles and responsibilities, stay up-to-date on the key issues and trends in the industry and prepare them to meet the challenges facing electric cooperatives now and in the future. NRECA offers director education courses throughout the year in conjunction with a variety of NRECA educational conferences and events across the country, in partnership with statewide associations and onsite at individual cooperatives. ■

75 YEARS OF ELECTRIC SERVICE

Oct. 22, 1948, is a day that lives in history for Slope Electric Cooperative. On that day, the Haynes Substation was energized around noon, bringing electricity to the remote and rural areas in Slope Electric's service territory.

Take a look at some of



Oct. 22, 1948

The day everyone was waiting for! The Haynes substation energized and work began in hooking up individual farms.

Dec. 12, 1948

The board of directors decided Slope Electric would purchase a digger and enough equipment to construct power lines on its own.

April 6, 1949

Bowman Substation was energized.

Dec. 1949

By the end of this year, over 384 miles of line were installed, and an additional 425 consumers were connected at Slope Electric.

Jan. 16, 1950

Reeder Substation was energized.

April 15, 1950

One of the system's worst outages occurred when flood waters in the Cedar and Cannonball rivers washed out lines.

June 19, 1950

New England Substation was energized.

December 1950

By the end of the year, 775 miles of line were completed and an additional 615 members were receiving electricity.

June 26, 1951

Mott Substation was energized.

December 1951

By the end of the year, an additional 808 miles of line was constructed and 759 members were receiving electricity for the first time.

December 1952

By the end of the year, an additional 402 miles of line was constructed and 237 additional members were energized. Everyone who had applied for electricity now had it.

June 3, 1957

Slope Electric's board of directors approved a change to the bylaws, permitting the return of capital credits to the members.

Fall 1958

The first electrically heated home was completed in Slope Electric's service territory. This belonged to Oscar Lien and was located 13 miles southeast of New England.

Each and every day since, the cooperative's board of directors and employees have rolled up their sleeves to help members in any way they could. This year, we are celebrating the past 75 years of electric service, and all that has come along with it.

our biggest milestones!



1966
The nationwide cooperative identity program began, and Slope Electric began using the rural electric cooperative logo.

1968
The first 90 miles of underground cable were installed between New England and Amidon.

1970
The Acme Substation north of Mott and Haley Substation south of Scranton and 20 miles of transmission line were constructed.

1971
Slope Electric joined Upper Missouri Generation and Transmission Cooperative.

1972
The Cedar Butte Substation and transmission line were built and added onto the system.

1975
Slope Electric changed the billing system to computer billing.

1979
Slope Electric built a warehouse in Bowman.

1981
A 230-kilovolt line from Baker to Hettinger was constructed.

1982
The Langberg Substation south of Rhame and the Centipede substations were completed.


1997
Slope Electric adopted the Operation Round Up program.

1998
Slope Electric became a Touchstone Energy® Cooperative partner.

2005
Slope Electric rebuilt four of the oldest substations.

2008
A new Bowman shop was built.
2008
Automated meter reading system installation began.

2017
Slope Electric implemented SmartHub.

Your Touchstone Energy® Cooperative 

Operation Roundup
SLOPE ELECTRIC COOPERATIVE

SLOPE ELECTRIC COOPERATIVE'S ANNUAL MEETING: Celebrating 75 years of electric service, power for generations!

Slope Electric Cooperative is gearing up for an entertaining and fun 2023 annual meeting. The meeting will begin with registration at 4:45 p.m. June 8 at the Hettinger Armory in Hettinger.

There is a little something for the whole family! Enjoy a meal from local food trucks, see the bucket truck our lineworkers use and the equipment they are required to wear, play in a bouncy house and much more! The annual meeting is a special time for co-op members to gather, share experiences, hear from co-op

leadership and, perhaps most importantly, vote to elect your board members.

Board director candidates announced

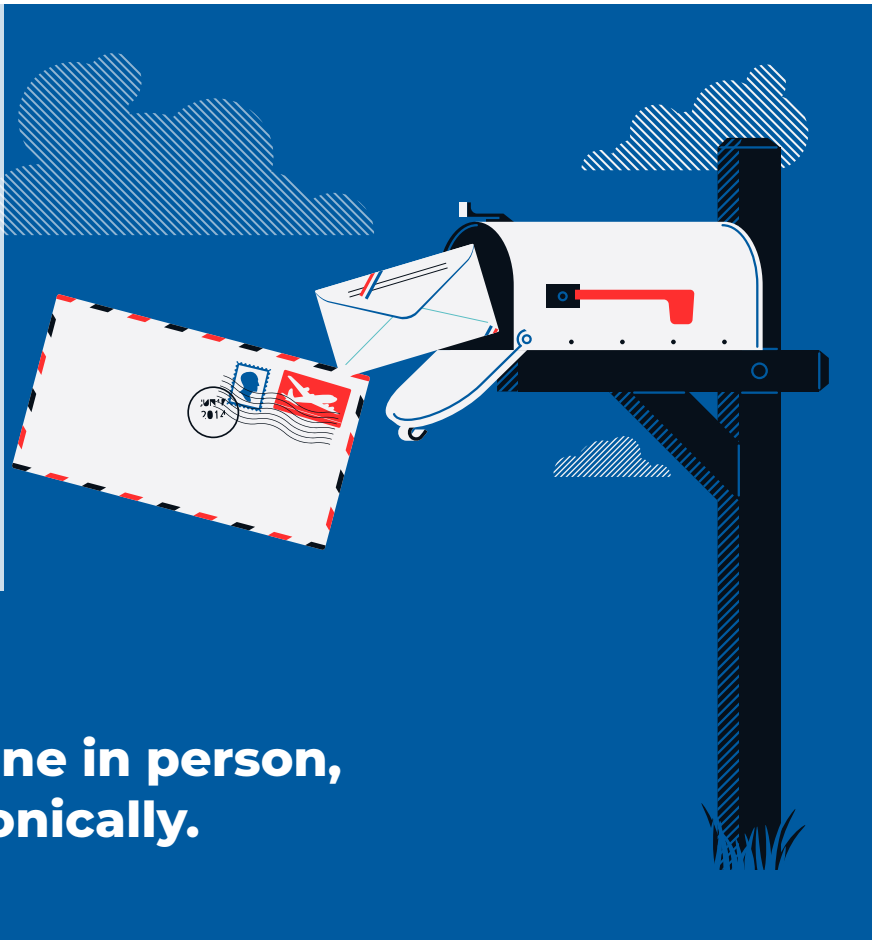
The Nominating Committee met on Feb. 27 to make nominations. Names to be placed on the annual meeting ballot include:

Adams County: **Steve Wegner**

Hettinger County: **Angela Carlson**

Hettinger County: **Charlotte Meier** ■

Slope Electric's annual report and information on how you can vote will be arriving in your mailbox in mid-May.



**Voting can be done in person,
by mail or electronically.**

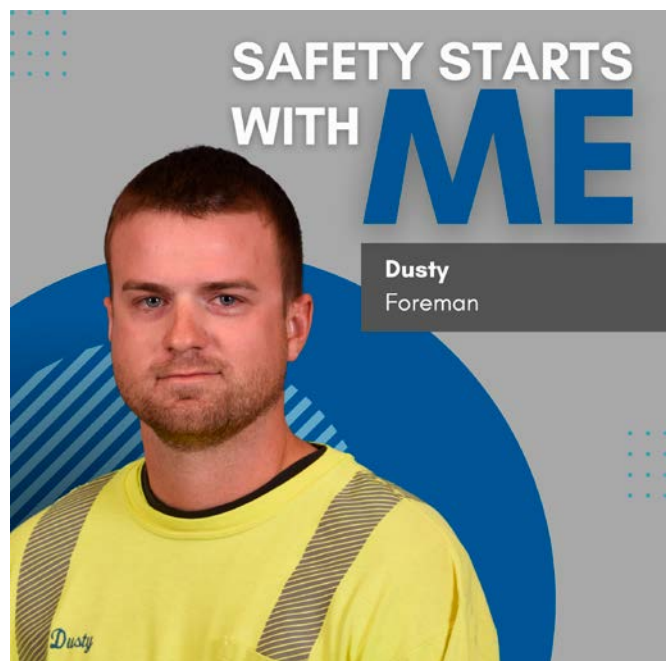
Safety Starts with ME: Make room for roadside crews

When the power goes out, so does Slope Electric Cooperative's line crews. Lineworkers are the first to respond after an outage occurs, and they work tirelessly to restore power to the communities we serve.

"If you're traveling and see one of our crews on the side of the road, we kindly ask that you move over if possible and give them a little extra space to work," said Dusty Hoff, foreman at Slope Electric. "We care about the safety of all, and this extra precaution ensures just that."

As the North Dakota move-over law notes, if you approach a crew while traveling on a two-lane road, moving over to the next lane might not be an option. In this case, we simply ask you to slow down when approaching roadside crews. If you approach a crew while traveling on a four-lane road, and safety and traffic conditions allow, we ask you to move into the far lane.

Utility crews aren't the only ones who could use the extra space. Emergency responders, such as law enforcement officers, firefighters and emergency medical technicians, often find themselves responding to emergency situations



near busy roadways. We ask you to follow the same procedures to help keep these crews safe.

"There's plenty of room for all. Let's work together to keep everyone safe on our local roadways," Hoff said. ■

Breaker, breaker!

Members, heat meters need to be energized at all times for billing purposes. Please notify Slope Electric Cooperative if the breaker to your heat meters needs to be turned off. There is a \$50 charge to reinstate the heat meter if Slope Electric is not notified. ■

Seeking volunteers for annual meeting

Slope Electric Cooperative needs your assistance at our upcoming annual meeting! We are looking for five volunteers to be a part of our election committee.

If you are interested, please email Brooke at BWaltner@slopeelectric.coop or call the Slope Electric office at 701-579-4191. ■




Slope Electric
Cooperative Inc.
Your Touchstone Energy® Cooperative

116 E. 12th St. - PO Box 338
New England, ND 58647-0338

Phone: 701-579-4191
or 800-559-4191
Fax: 701-579-4193

Email us:
comments@slopeelectric.coop

UNDERGROUND LINE LOCATES
800-795-0555 or 811

**SLOPE ELECTRIC
COOPERATIVE OFFICERS
AND DIRECTORS**

Steven Wegner, President
Anthony Larson, Vice President
Angela Carlson, Secretary
Henry "Chip" Fischer, Treasurer
Jerome Caron, Director
Dale Hande, Director
Lauren Klewin, Director
Charlotte Meier, Director

MANAGEMENT

Jason Bentz
CO-GM/CEO

Travis Kupper
CO-GM/CEO

www.slopeelectric.coop

Become a fan of Slope Electric Cooperative
to learn timely co-op news!

*Slope Electric Cooperative Inc.
is an equal opportunity provider.*

Report from THE BOARD OF DIRECTORS

Regular meeting held at the Slope Electric office in New England

- Approved agenda
- Approved minutes from previous meeting on Mar. 30
- Heard co-general managers/CEOs update
- Heard Basin Electric Cooperative updates
- Heard CFO report
- Heard operations report
- Heard member relations summary
- Heard the attorney report
- Reviewed board member reports